

PLANK

WOOD VENEERED
ACOUSTIC WALL & CEILING PANELS

Design with the warmth, elegance and beauty of natural wood, with the added benefit of acoustic absorption. The **PLANK** wall and ceiling system is available with over 40 wood species, standard and custom plank widths and spacing between planks. The **PLANK** system is quick and easy to install.



TYPE

PLANK wood veneered acoustic panel for interior application

MATERIALS

Face*: Sliced Real Wood Veneer, 0.6 mm
Quality A or as specified
**FSC-Certified wood veneers available*
**Engineered wood veneers available*
**Painted finishes available*
**High Pressure Laminate (HPL) available*

Finish: UV Premium Interior Lacquered - Clear Matt

Base: Fire-retardant MDF (Moisture Resistant NAUF and Coloured options available)

Back: Blind Veneer + Black Acoustic Fleece

Core (Optional): 50 mm acoustic core can be installed behind **PLANK** panels to maximise acoustic performance.

Acoustic core and furring typically provided as separate items.

STANDARD DIMENSIONS *(Custom sizes available)*

Thickness: 17 mm
Size (L x W): 2480 mm x 65 mm
2480 mm x 95 mm
2480 mm x 120 mm
2480 mm x 150 mm
2480 mm x 200 mm

EDGE

Square or bevelled edge.

ACOUSTICS

NRC as high as 0.80 according to installation methods.

PERFORATIONS

Typically provided non-perforated. Available with regular or irregular mini-micro perforations, Ø0.5 mm, centre-to-centre 1.9 mm. Perforations all the way to the edges of the panel.

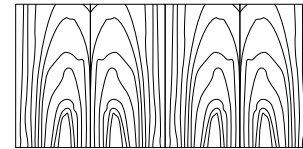
MOUNTING *(Custom mounting options available)*

SK5/0, SK5/5, SK5/10, or SK5/20 clips provided by **eomac**, mounted to timber or metal furring.

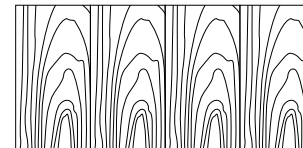
Special turn clips TDK5/10, TDK5/10, or TDK5/20 available when installing to T-grid.

WOOD VENEER

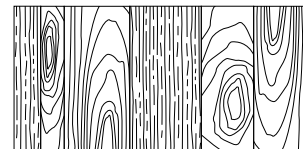
The view-side of panels are finished with a top quality, hand-selected veneer. Over 40 wood species are available in stock. Panels are finished in a premium clear lacquer over a three-stage process, ensuring only the highest standard and durability. Custom staining and PANTONE, RAL or NCS colour matching is available. Mismatched configuration is **eomac's** standard, providing a natural or variable wood art effect. Book-matched and Slip-matched are available upon request.



Book-matched



Slip-matched



Mismatched

FLAMMABILITY

Fire test data performed by independent laboratories. Support documentation available upon request. Note that all data provided is for typical usage.

eomac is adaptable to other situations and custom applications.



CANADA: CAN/ULC-S 102: Class 1
EU: EN 13501-1: Class B, s2, d0
USA: ASTM E-84: Class A
NFPA 265; UBC 8-2: Passes



PLANK

WOOD VENEERED ACOUSTIC PANELS

INSTALLATION



Face: Slice Real Wood Veneer AA Quality, 0.6mm
Finish: UV Premium Interior Lacquered - Clear

Back: Blind Veneer For Balance
Base: Fire Retardant MDF



T-bar



Black Acoustic Fleece



Concealed mounting clips

STEP 1: T-Bar suspended every 600 O.C.
perpendicular to direction of planks.



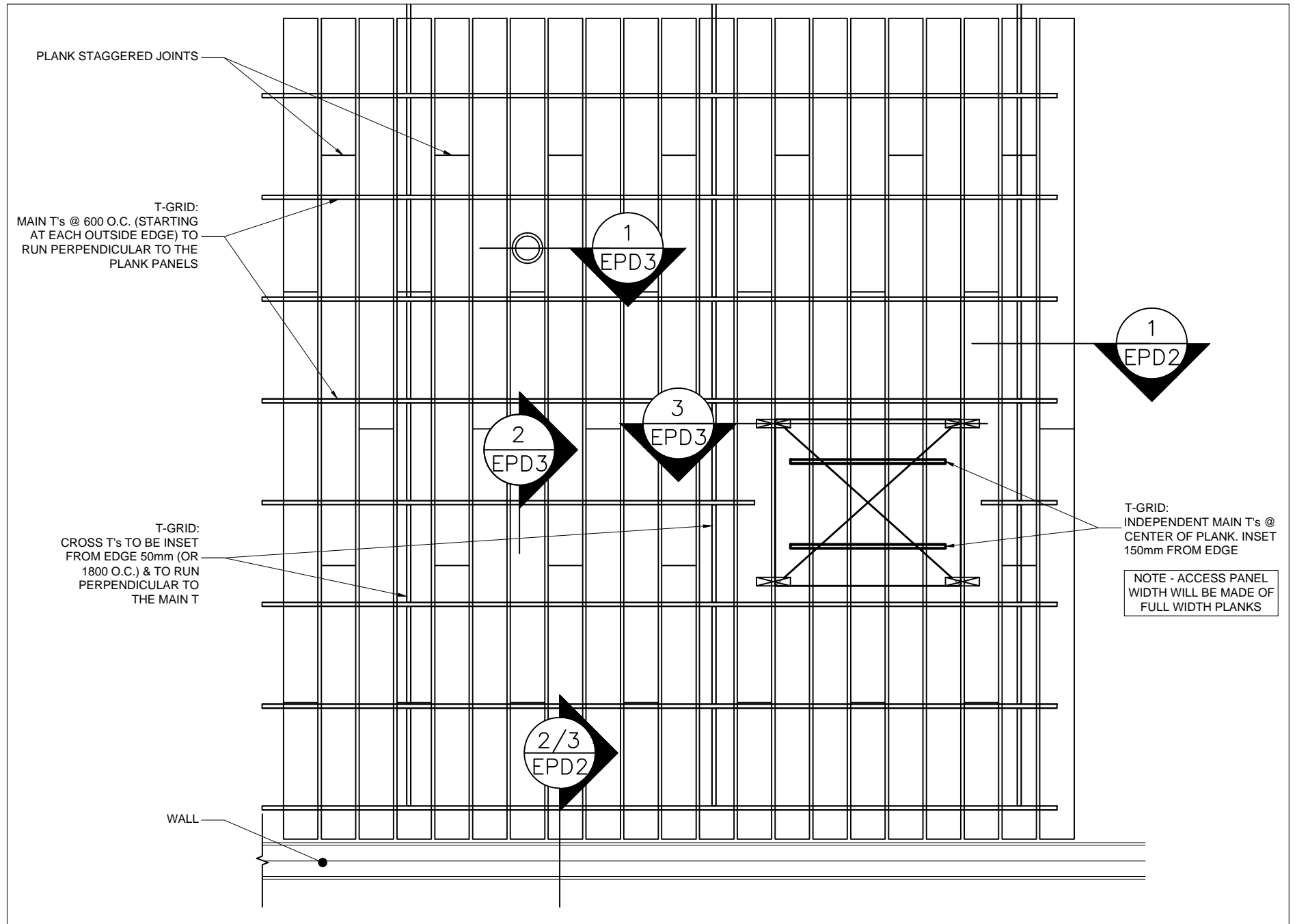
STEP 2: Turn clips secures directly to T-bar and sets reveal between panels.



STEP 3: Black acoustic fleece inserted to conceal clips and provide decorative appearance and acoustic absorption.







1 "TYPICAL" PLANK CEILING
E-PD-1 SCALE : N.T.S.

ISSUE FOR INFORMATION/ APPROVAL

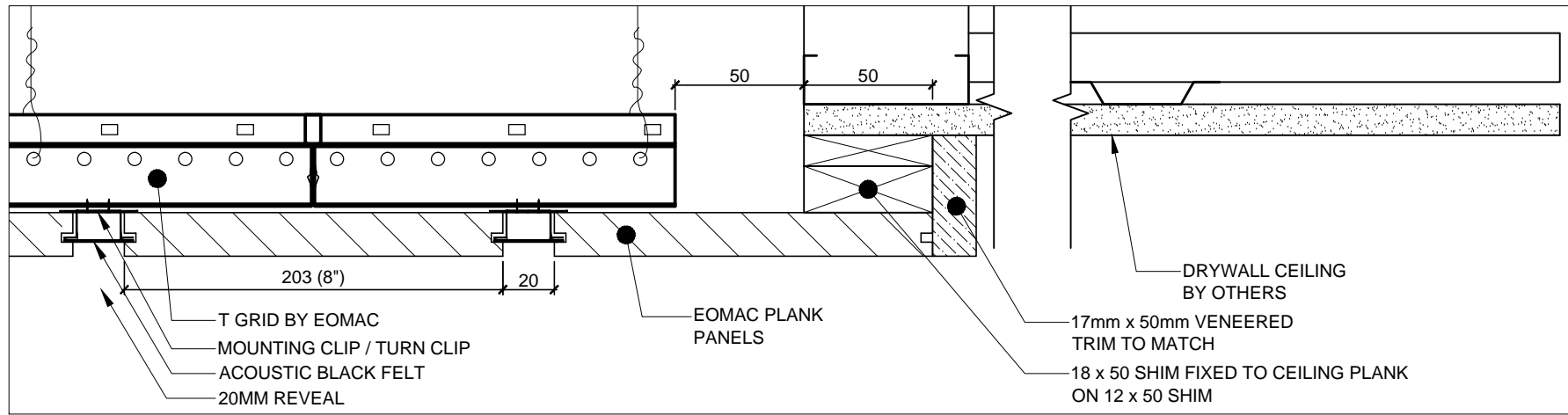
NOTES	
0	JULY 8, 2014 TYPICAL PLANK DETAILS
REV.	DATE



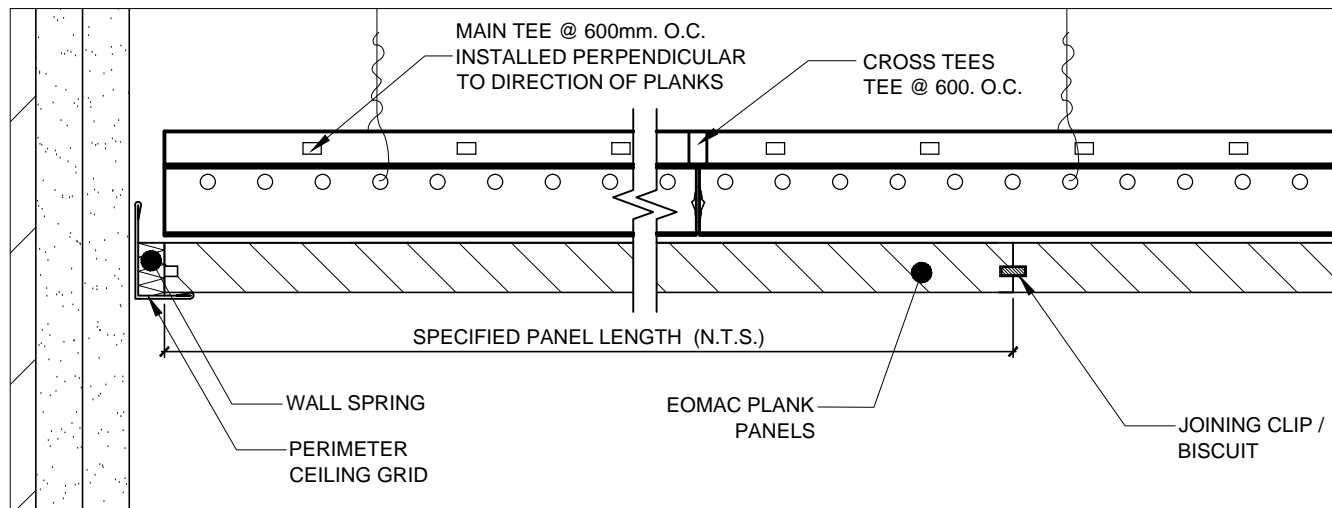
© COPYRIGHT EOMAC LTD / EOMAC UK LIMITED
ALL RIGHTS RESERVED. NO PART OF DOCUMENT WHETHER PRINT FORM OF SUPPLIED AS DIGITAL DATA MAYBE REPRODUCED IN ANY MEANS WITHOUT PRIOR PERMISSION OF EOMAC LTD.

PROJECT
TYPICAL PLANK DETAILS

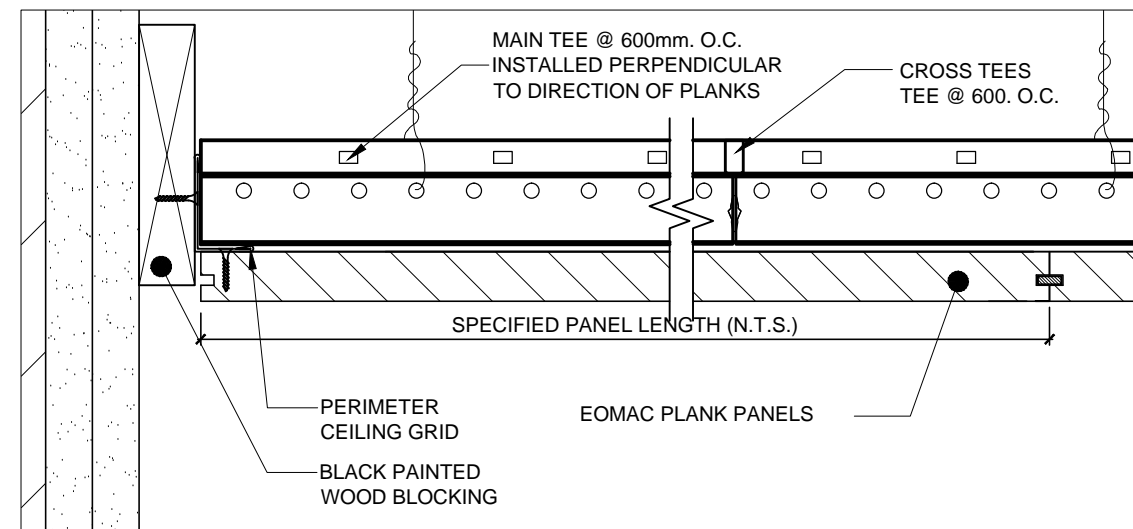
DRAWING TITLE DETAILS	
SCALE AS SHOWN	DATE 08/ 07/ 14
DRAWN BY S.C.	DRAWING NO. E-PD-1
CHECKED BY K.B.	



1 PERIMETER EDGE OF PLANK CEILING ADJOINING DRYWALL CEILING
E-PD-2 SCALE : N.T.S.



2 WALL / CEILING - OPTION 1
E-PD-2 SCALE : N.T.S.



3 WALL / CEILING - OPTION 2
E-PD-2 SCALE : N.T.S.

EOMAC NOTES

ISSUE FOR INFORMATION/ APPROVAL

NOTES

0 JULY 8, 2014
 TYPICAL PLANK DETAILS

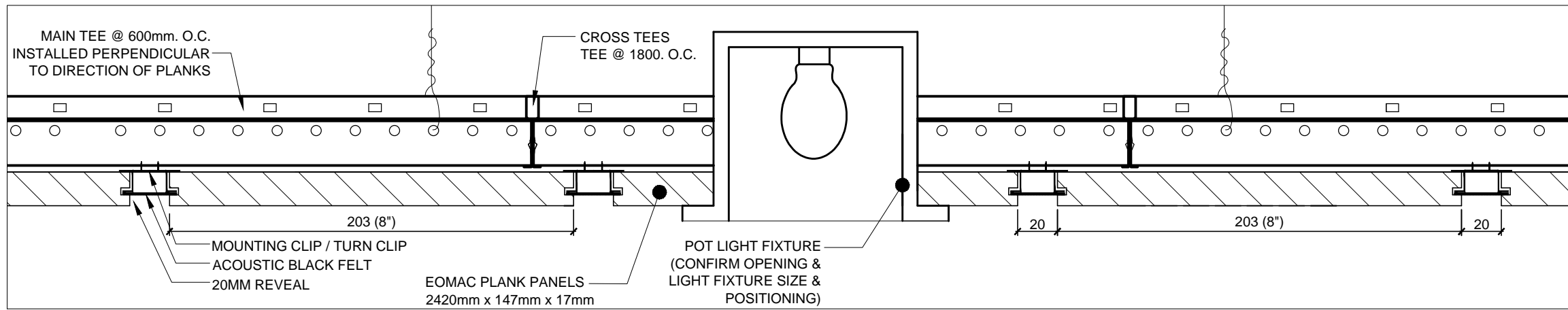
REV. DATE



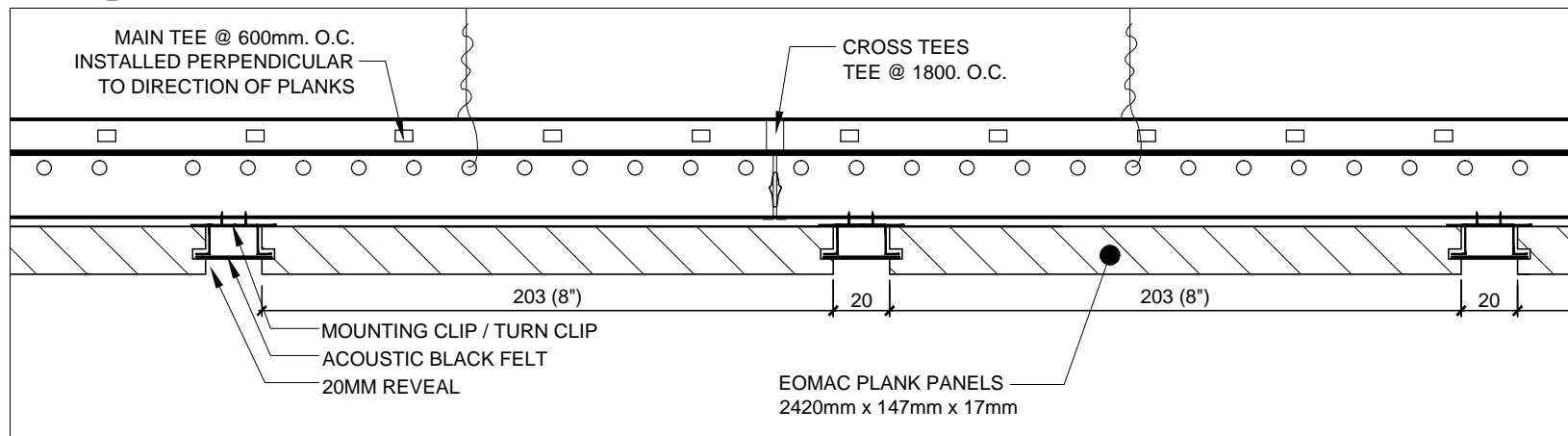
© COPYRIGHT EOMAC LTD / EOMAC UK LIMITED
 ALL RIGHTS RESERVED. NO PART OF DOCUMENT WHETHER PRINT FORM OF SUPPLIED AS DIGITAL DATA MAYBE REPRODUCED IN ANY MEANS WITHOUT PRIOR PERMISSION OF EOMAC LTD.

PROJECT
TYPICAL PLANK DETAILS

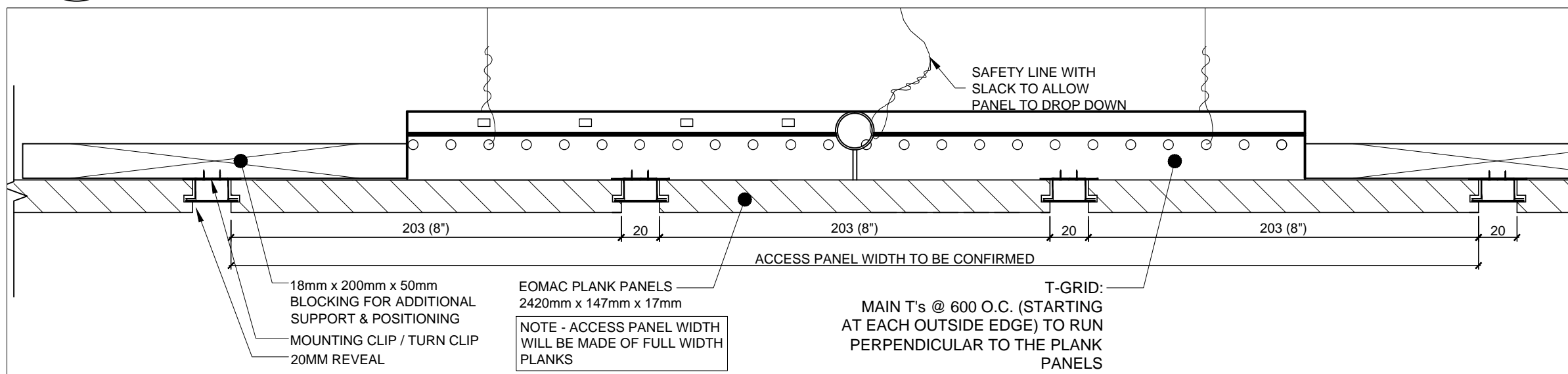
DRAWING TITLE DETAILS	
SCALE AS SHOWN	DATE 08/ 07/ 14
DRAWN BY S.C.	DRAWING NO. E-PD-2
CHECKED BY K.B.	



1 POT LIGHT FIXTURE
E-PD-3 SCALE : N.T.S.



2 STANDARD T-GRID SYSTEM
E-PD-3 SCALE : N.T.S.



3 ACCESS HATCH
E-PD-3 SCALE : N.T.S.

EOMAC NOTES

ISSUE FOR INFORMATION/ APPROVAL

NOTES

0 JULY 8, 2014
TYPICAL PLANK DETAILS

REV. DATE



www.eomac.com

© COPYRIGHT EOMAC LTD / EOMAC UK LIMITED
ALL RIGHTS RESERVED. NO PART OF DOCUMENT WHETHER PRINT FORM OF SUPPLIED AS DIGITAL DATA MAYBE REPRODUCED IN ANY MEANS WITHOUT PRIOR PERMISSION OF EOMAC LTD.

PROJECT

TYPICAL PLANK DETAILS

DRAWING TITLE DETAILS	
SCALE AS SHOWN	DATE 08/ 07/ 14
DRAWN BY S.C.	DRAWING NO. E-PD-3
CHECKED BY K.B.	



STORAGE AND HANDLING INSTRUCTIONS

All Veneered wood panels/elements should be stored in a dry interior location and shall remain in the original packaging prior to installation and avoid damage. Never stack pallets of wood elements on top of each other. The panels/elements are packed on wooden pallets and should be stored in a conditioned space. Do not store in unconditioned spaces with humidity at 55% and no more than +/-15% fluctuation. Store the panels/elements in a room with a temperature between 16 to 22 degrees Celsius. These temperature and humidity conditions must be met throughout the lifetime of the panels/elements.

Use proper care when handling to avoid damage. Never store the panels/elements directly on the floor. The panels/elements are maintenance free, but can be cleaned with a soft, damp cloth. The use of soaps of any kind is not advised.

Site Conditions

The site location where the panels will be installed should be free of construction dust and debris. All wet work such as plastering, concrete and painting is required to be completed and dried. The panels/elements are produced for interior usage. Prior to the installation the black plastic foil around the Grill elements needs to be removed at least 48 hours before installation, to let the panels acclimatize.

Disclaimer

Wooden products are a natural building material and they will react to changes in humidity. Wood by its nature could slightly in- or expand as a result of a changing environment. Wood may also have a tendency to warp, twist or bow due to natural tension in the components and changes in humidity and/or temperature. Be aware of these natural tendencies when installing the panels/elements. Color variations, grains or other natural characteristics are one of the reasons that a natural product is chosen and can never be a valid reason for complaint.