

# PLANK

WOOD VENEERED  
ACOUSTIC WALL & CEILING PANELS

Design with the warmth, elegance and beauty of natural wood, with the added benefit of acoustic absorption. The **PLANK** wall and ceiling system is available with over 40 wood species, standard and custom plank widths and spacing between planks. The **PLANK** system is quick and easy to install.



**TYPE**

PLANK wood veneered acoustic panel for interior application

**MATERIALS**

- Face\*: Sliced Real Wood Veneer, 0.6 mm  
Quality A or as specified  
  
\*FSC® Certified wood veneers available from our UK office  
\*Engineered wood veneers available  
\*Painted finishes available  
visit **eomac's** Online Information Centre at **eomac.com** \*High Pressure Laminate (HPL) available
- Finish: UV Premium Interior Lacquered - Clear Matt
- Base: Fire-retardant MDF (Moisture Resistant NAUF and Coloured options available)
- Back: Blind Veneer + Black Acoustic Fleece
- Core (Optional): 50 mm acoustic core can be installed behind **PLANK** panels to maximise acoustic performance.  
Acoustic core and furring typically provided as separate items.

**STANDARD DIMENSIONS** (Custom sizes available)

- Thickness: 17 mm
- Size (L x W): 2050 mm x 65 mm / 2780 mm x 65 mm  
2050 mm x 95 mm / 2780 mm x 95 mm  
2050 mm x 120 mm / 2780 mm x 120 mm  
2050 mm x 150 mm / 2780 mm x 150 mm  
2050 mm x 200 mm / 2780 mm x 200 mm

**EDGE**

Square or bevelled edge.

**ACOUSTICS**

**NRC as high as 0.80** according to installation methods.

**PERFORATIONS**

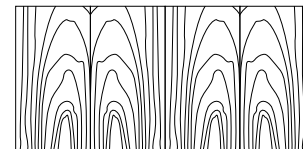
Typically provided non-perforated. Available with regular or irregular mini-micro perforations, Ø0.5 mm, centre-to-centre 1.9 mm. Perforations all the way to the edges of the panel.

**MOUNTING** (Custom mounting options available)

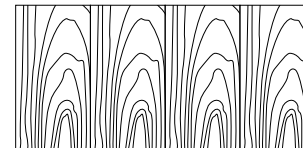
SK5/0, SK5/5, SK5/10, or SK5/20 clips provided by **eomac**, mounted to timber or metal furring.  
Special turn clips TDK5/10, TDK5/10, or TDK5/20 available when installing to T-grid.

**WOOD VENEER**

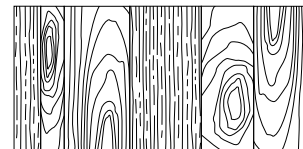
The view-side of panels are finished with a top quality, hand-selected veneer. Over 40 wood species are available in stock. Panels are finished in a premium clear lacquer over a three-stage process, ensuring only the highest standard and durability. Custom staining and PANTONE, RAL or NCS colour matching is available. Mismatched configuration is **eomac's** standard, providing a natural or variable wood art effect. Book-matched and Slip-matched are available upon request.



Book-matched



Slip-matched



Mismatched

**FLAMMABILITY**

Fire test data performed by independent laboratories. Support documentation available upon request. Note that all data provided is for typical usage.

**eomac** is adaptable to other situations and custom applications.



- CANADA: CAN/ULC-S 102: Class 1
- EU: EN 13501-1: Class B, s2, d0
- USA: ASTM E-84: Class A  
NFPA 265; UBC 8-2: Passes



FSC® Certified products available from our UK office.

The mark of responsible forestry



# PLANK

WOOD VENEERED ACOUSTIC PANELS

## INSTALLATION



**Face:** Slice Real Wood Veneer AA Quality, 0.6mm

**Finish:** UV Premium Interior Lacquered - Clear

**Back:** Blind Veneer For Balance

**Base:** Fire Retardant MDF



T-bar



Black Acoustic Fleece



Concealed mounting clips

**STEP 1:** T-Bar suspended every 600 O.C.  
perpendicular to direction of planks.



**STEP 2:** Turn clips secures directly to T-bar and sets reveal between panels.

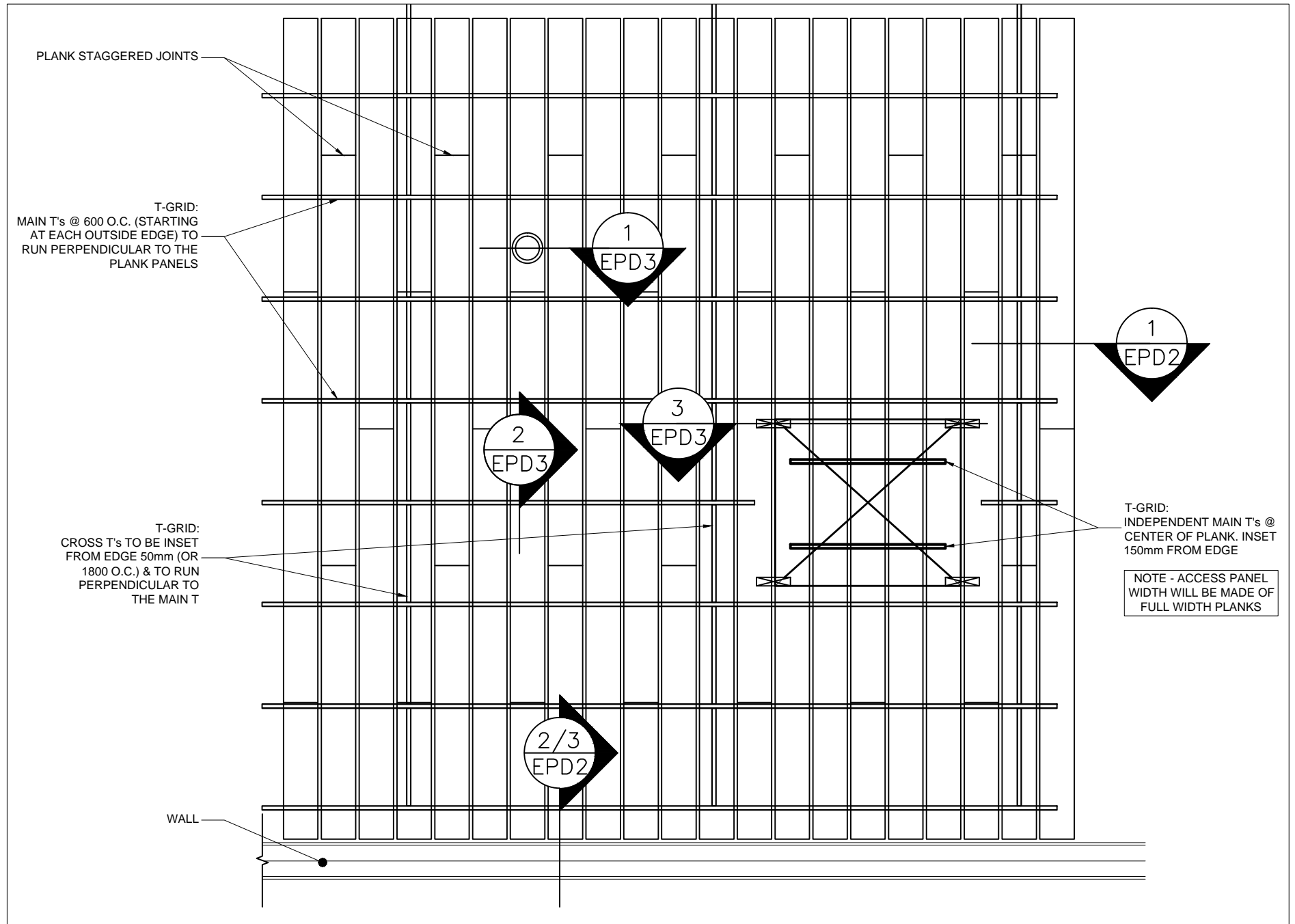


**STEP 3:** Black acoustic fleece inserted to conceal clips and provide decorative appearance and acoustic absorption.









1 "TYPICAL" PLANK CEILING  
 E-PD-1 SCALE : N.T.S.

ISSUE FOR INFORMATION/ APPROVAL

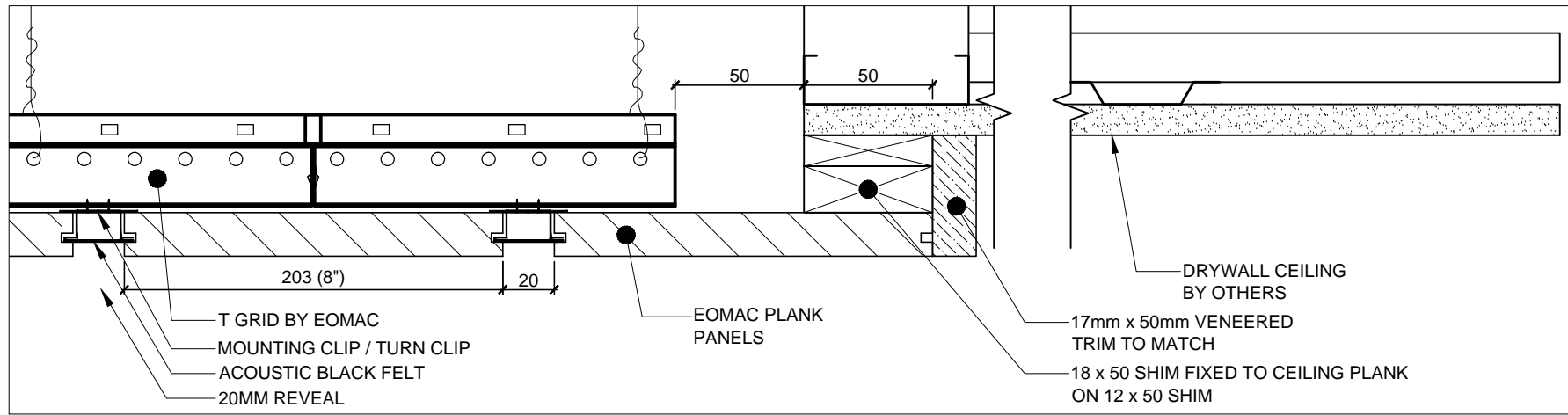
NOTES	
0	JULY 8, 2014 TYPICAL PLANK DETAILS
REV.	DATE



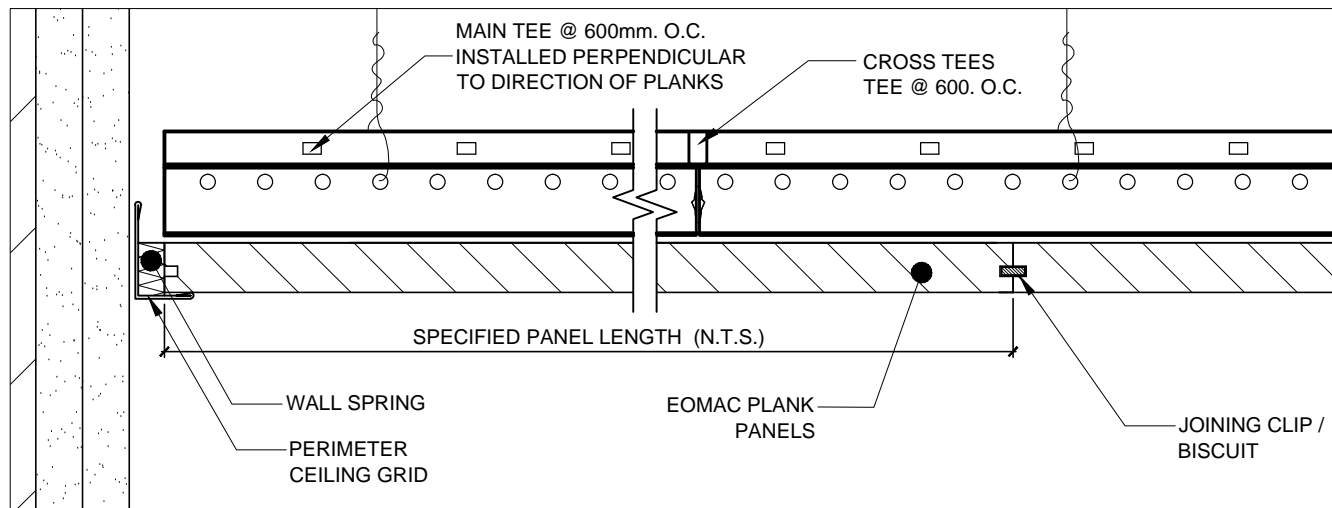
© COPYRIGHT EOMAC LTD / EOMAC UK LIMITED  
 ALL RIGHTS RESERVED. NO PART OF DOCUMENT WHETHER PRINT FORM OF SUPPLIED AS DIGITAL DATA MAYBE REPRODUCED IN ANY MEANS WITHOUT PRIOR PERMISSION OF EOMAC LTD.

PROJECT  
**TYPICAL PLANK DETAILS**

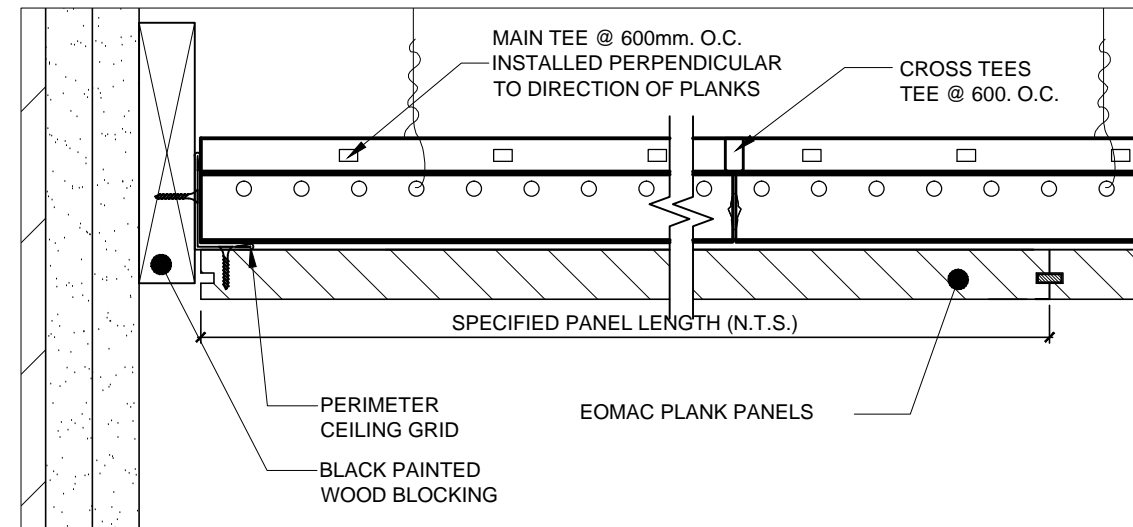
DRAWING TITLE <b>DETAILS</b>	
SCALE AS SHOWN	DATE 08/ 07/ 14
DRAWN BY S.C.	DRAWING NO. <b>E-PD-1</b>
CHECKED BY K.B.	



**1** PERIMETER EDGE OF PLANK CEILING ADJOINING DRYWALL CEILING  
**E-PD-2** SCALE : N.T.S.



**2** WALL / CEILING - OPTION 1  
**E-PD-2** SCALE : N.T.S.



**3** WALL / CEILING - OPTION 2  
**E-PD-2** SCALE : N.T.S.

**EOMAC NOTES**

**ISSUE FOR INFORMATION/ APPROVAL**

**NOTES**

0 JULY 8, 2014  
 TYPICAL PLANK DETAILS

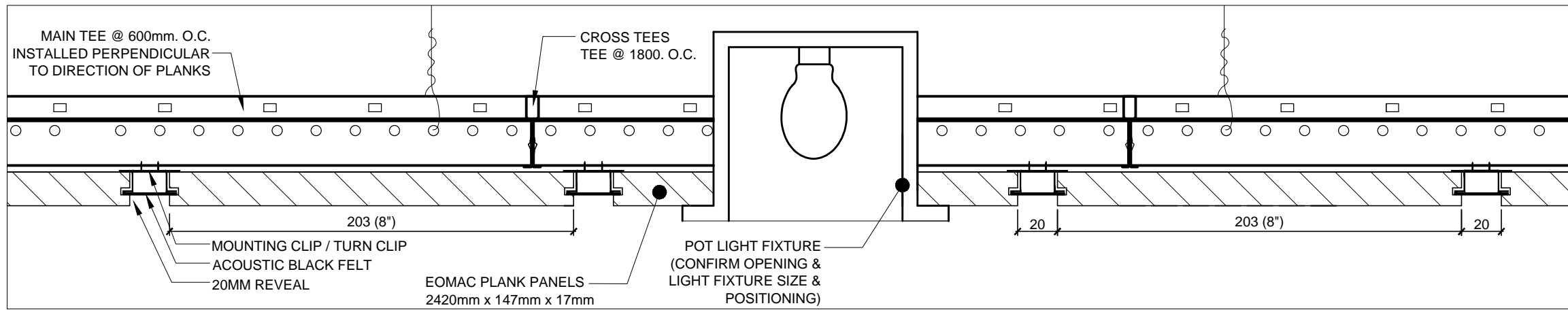
REV. DATE



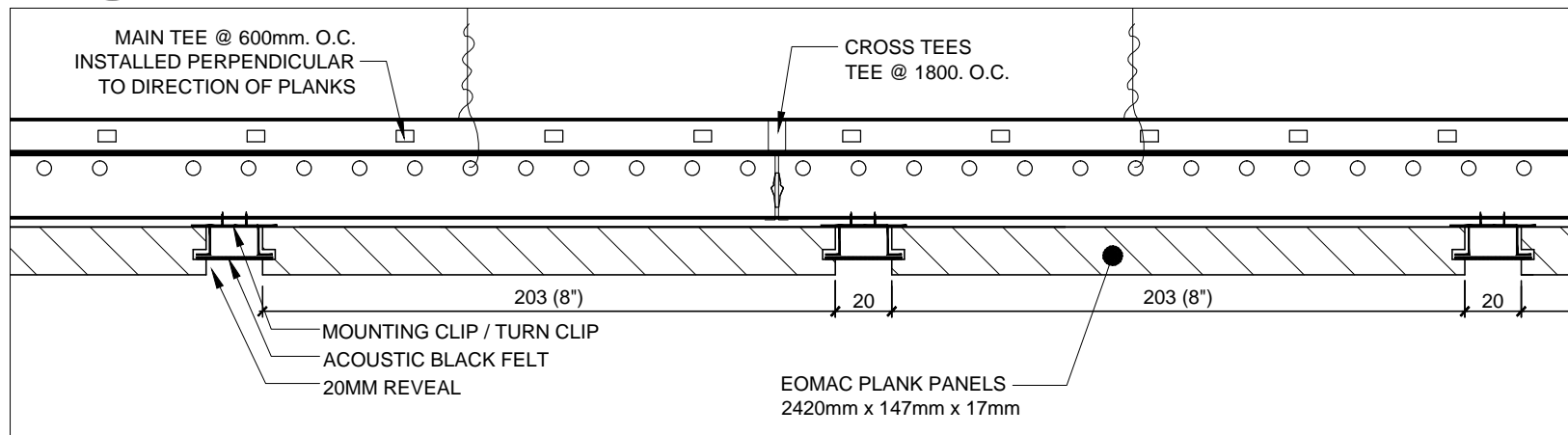
© COPYRIGHT EOMAC LTD / EOMAC UK LIMITED  
 ALL RIGHTS RESERVED. NO PART OF DOCUMENT WHETHER  
 PRINT FORM OF SUPPLIED AS DIGITAL DATA MAYBE  
 REPRODUCED IN ANY MEANS WITHOUT PRIOR PERMISSION OF  
 EOMAC LTD.

PROJECT  
**TYPICAL  
 PLANK DETAILS**

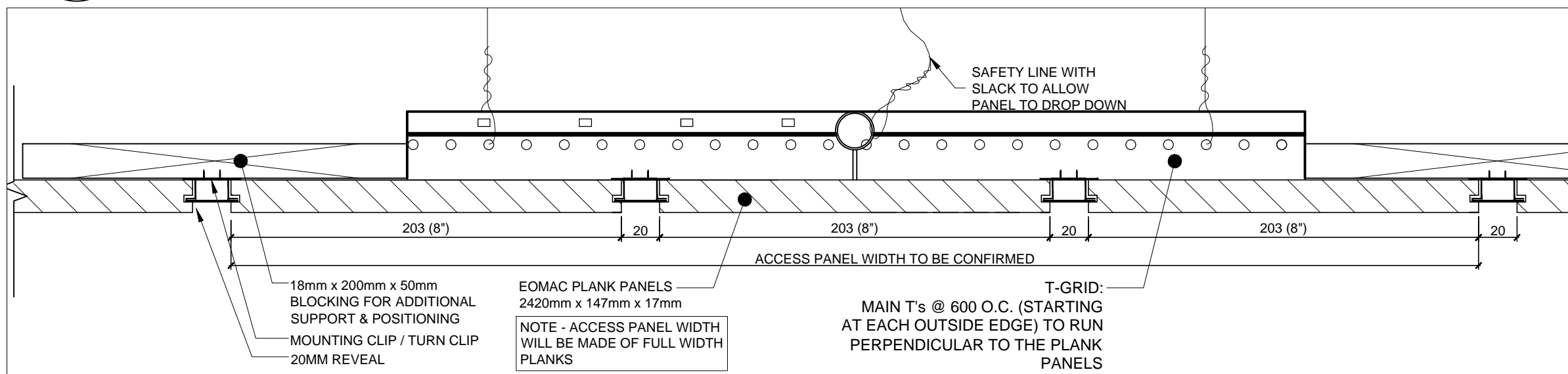
DRAWING TITLE <b>DETAILS</b>	
SCALE AS SHOWN	DATE 08/ 07/ 14
DRAWN BY S.C.	DRAWING NO. <b>E-PD-2</b>
CHECKED BY K.B.	



**1** POT LIGHT FIXTURE  
E-PD-3 SCALE : N.T.S.



**2** STANDARD T-GRID SYSTEM  
E-PD-3 SCALE : N.T.S.



**3** ACCESS HATCH  
E-PD-3 SCALE : N.T.S.

**EOMAC NOTES**

**ISSUE FOR INFORMATION/ APPROVAL**

**NOTES**

0 JULY 8, 2014  
TYPICAL PLANK DETAILS

REV. DATE



www.eomac.com

© COPYRIGHT EOMAC LTD / EOMAC UK LIMITED  
ALL RIGHTS RESERVED. NO PART OF DOCUMENT WHETHER PRINT FORM OF SUPPLIED AS DIGITAL DATA MAYBE REPRODUCED IN ANY MEANS WITHOUT PRIOR PERMISSION OF EOMAC LTD.

PROJECT

**TYPICAL PLANK DETAILS**

DRAWING TITLE <b>DETAILS</b>	
SCALE AS SHOWN	DATE 08/ 07/ 14
DRAWN BY S.C.	DRAWING NO. <b>E-PD-3</b>
CHECKED BY K.B.	